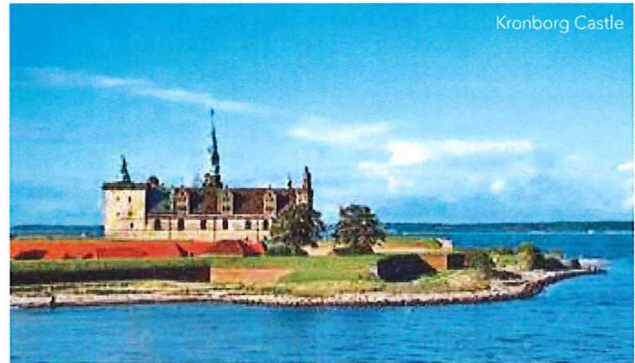


HIDDEN BALTIC & SCANDINAVIA

A voyage from Aberdeen to Helsinki aboard the MS Hebridean Sky

28th July to 11th August 2024



If ever there was a sea perfect for exploring by ship, it is the Baltic. Join us on this summer voyage of discovery as we explore the many delights of this fascinating region. One of the many extraordinary experiences of the Baltic is the summer light that gives the sea and landscape a very special quality. After a long winter, the region responds to the sun unlike anywhere else and there is a calm and order which makes exploration so enjoyable, especially when travelling aboard the MS Hebridean Sky with just 118 like-minded, fellow guests.

With over thirty years of experience operating cruises in this region, we believe we have the most perfectly balanced cruise. Whilst not forsaking our old-time favourites such as Stockholm and Tallinn we also visit some smaller ports such as Kalmar and Turku which are well off the path of the big cruise vessels that ply the region. Other well-hidden treasures include Denmark's Bornholm Island, Visby on the Swedish island of Gotland and the Estonian island of Saaremaa, a gem with its Medieval Episcopal castle and timeless countryside. A highlight for many will be our call to Denmark's northernmost town of Skagen whose amazing seascapes and incredible light casts a lifelong spell on all who visit.

Each day will see us in a new port of call with a range of included, guided excursions and the complex past of the region will be brought to life by our excellent local guides and onboard Guest Speaker, helping us to gain a greater understanding of both old and new Baltic nations.



The Itinerary

Day 1 Aberdeen, Scotland. Embark the MS Hebridean Sky this afternoon. Transfers will be provided from Aberdeen Airport and Aberdeen Railway Station at a fixed time. Enjoy welcome drinks and dinner on board as we sail this evening.

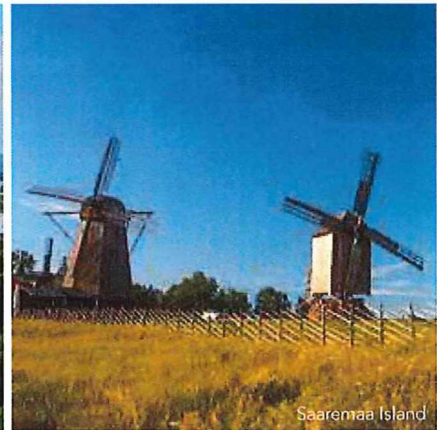
Day 2 At Sea. Relax on board as we sail across the North Sea to Denmark. Maybe join a lecture in the lounge or find a spot on deck.

Day 3 Skagen, Denmark. Skagen is a 600 year old market town situated in the far north of Denmark where the breathtaking scenery and light have inspired poets, artists and musicians over the years whilst the area around Skagen has been designated as a rare, authentic natural beauty spot by the World Wide Fund for Nature. We will visit Grenen, the northernmost part of Denmark where the North Sea meets the Baltic and where the daily movement of sand has created a spit that is constantly moving. See the 14th century Sanded Church named after Saint Laurence, the seafarer's and Skagen's patron saint, which sunk beneath the sand in the 18th century and where today only the tower of the ancient church is visible. This afternoon is free to discover the winding alleys in the atmospheric old quarters or the vibrant atmosphere at the marina. Alternatively, take the chance to visit the local museum to see the artwork of Ancher and Kroyer who were inspired by the region.

Day 4 Helsingor. The Danish King, Eric of Pomerania built a fortress in the early 15th century to enforce the collection of dues for all ships wishing to enter the Baltic. In the following century Frederick II rebuilt the castle into a magnificent Renaissance castle, Kronborg was considered at the time to be the strongest fortress in Europe. The castle is known to many as 'Elsinore' the setting for Shakespeare's tragedy, Hamlet, Prince of Denmark. We will enjoy a morning exploring the castle and the old town before returning to the ship for lunch. This afternoon you can choose to explore further at your own pace or relax on board.

Day 5 Ronne, Bornholm Island. Arrive this morning into Ronne and on our excursion we explore the highlights of northern Bornholm. Bornholm Island is a mixture of wheat fields, forests and an attractive coast dotted with fishing villages. On an island drive we will see the famous 12th century Osterlars Round Church and visit the town of Gudjem where we can sample the smoked herring. Also see Hammerhaus Castle offering fantastic views of the island's rugged coastline. The afternoon is free to explore Ronne at your own pace before we sail this evening.

Day 6 Kalmar, Sweden. We arrive in Sweden at one of the country's oldest cities and ports, Kalmar, where we will berth close to the historical centre. A morning tour will include Kalmar Castle, one of the best-preserved Renaissance castles in Scandinavia and a stronghold of royal



power. Originating from the 12th century, the current building represents the rule of the Vasa Kings who rebuilt it in the style of a Renaissance palace. Alternatively, join a visit to the UNESCO island of Oland. Visit Stora Alvaret, a giant limestone plateau containing ancient remains, unique flora and fauna as well as the royal palace of Solliden. Built by Queen Victoria of Sweden in 1903, it is still used as a summer retreat by the Swedish Royal Family and we will have time to explore the extensive gardens and pavilion. The afternoon is free to wander the cobbled streets of the old town.

Day 7 Visby, Gotland Island. Today we visit this once important Hanseatic port on the island of Gotland. Best explored on foot, the beautifully preserved Medieval town snuggles inside 13th century walls, housing 44 watchtowers. In Viking times and several centuries after, the Swedish island of Gotland and especially the city of Visby became a centre of trade in the Baltic Sea and is a World Heritage Site. Walk its streets from the Middle Ages and see its gardens ablaze with flowers, earning the city its nickname 'the city of ruins and roses'. Later, visit the impressive St Maria Cathedral and wander the paths of the botanical gardens. Enjoy an afternoon at leisure to explore further and maybe see the Viking exhibits at the Gotland Museum.

Day 8 Stockholm. This morning we will enjoy a guided city tour which includes the Vasa Museum, built around the 17th century warship which sank in Stockholm's inner harbour on her maiden voyage in 1628; its discovery in 1956 and subsequent salvage in 1961 is one of the most important events in marine archaeology. In addition to the well-preserved, elaborately decorated hull, thousands of items from the ship, including hundreds of sculptures, have been recovered. On our return to the MS Hebridean Sky we will drive through old Stockholm and past the Parliament Building and Royal Palace which overlooks the inner harbour. After some free time we sail in the late afternoon through the many islands of the Swedish archipelago. This is a great sailing area and the islands are peppered with attractive summer homes.

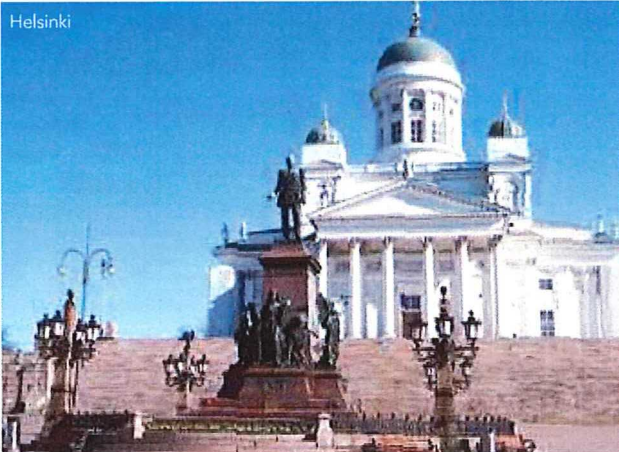
Day 9 Mariehamn, Finland. Sail this morning into the attractive town of Mariehamn. On an island tour we will head into the beautiful countryside

along scenic roads towards the Jan Karlsgarden Museum where we learn about the island's farming traditions. We continue to Badhausberget which provides panoramic views over the town and islands before visiting the fascinating Aland Maritime Museum with its exhibits of model ships as well as highlighting the region's shipbuilding history. Return to the ship for lunch and spend a relaxing afternoon to explore at leisure before cruising this evening through some of the 6700 islands of the Aland archipelago.

Day 10 Turku. After sailing through the 20,000 islands of the Turku archipelago we arrive at the oldest city in Finland. Originally part of Sweden, Turku became Finland's first capital in 1229 and remained so until 1812. On a morning tour we will discover Turku Castle, the largest in Finland and a national treasure. The castle has stood guard over the River Aura since the 13th century and serves as a fascinating museum containing hundreds of artefacts. We will also see the 14th century cathedral and have time to explore the town. Alternatively, join an excursion to Kulturanta, the official summer residence of the President of Finland. Here we explore the 16 hectare landscaped park adorned with several flower gardens, pergolas, gazebos and fountains. Return to the MS Hebridean Sky via the historic holiday resort and spa town of Naantali where there will be some free time to explore the winding streets of old wooden houses. The afternoon is free to explore the city further from our central berth.

Day 11 Saaremaa, Estonia. This morning we arrive at Estonia's largest island which offers a glimpse of a bygone age. Untouched by industry, it is a green and very pleasant island dotted with attractive villages in a rolling forested landscape. An island drive will take you back in time through a countryside of stone walls, thatched roofs, traditional villages and windmills before we end at the lovely capital Kuressaare with its magnificent Medieval castle. We will stroll through the streets of the enchanting old town before taking a local lunch. Enjoy some free time in the town before returning to the ship this afternoon.

Day 12 Tallinn. Over breakfast we arrive in the historic maritime city of Tallinn with her awe inspiring city walls and fortifications, narrow Medieval streets and gateways which remain remarkably well preserved. In the Upper Town we will enjoy the views from Dome Hill with the extraordinary



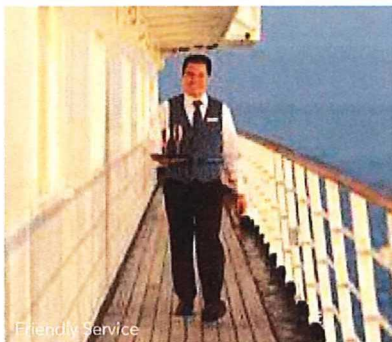
vista of domes, spires and gables and see Toompea Castle, once a fortress, and now the seat of the Estonian parliament. Walking to the lower Old Town we will visit the main Square where we will find the oldest pharmacy in Europe, the Gothic Cathedral and the 15th century Town Hall. There will be free time to explore further at your own pace this afternoon before we sail tonight.

Day 13 Kotka, Finland. Built on the site where the River Kymijoki meets the Baltic Sea, picturesque Kotka has a long seafaring tradition. This morning we will explore the history of the region and visit the Langinkoski Imperial Fishing Lodge which was built in 1889 for Alexander III, the future Emperor of Russia who used it as a summer home. It is now a living museum situated in a stunning nature reserve on the river. Continue to the Maritime Centre Vellamo where local guides will enlighten us about the maritime and cultural heritage of the region. The afternoon is free to explore the old city from our central berth.

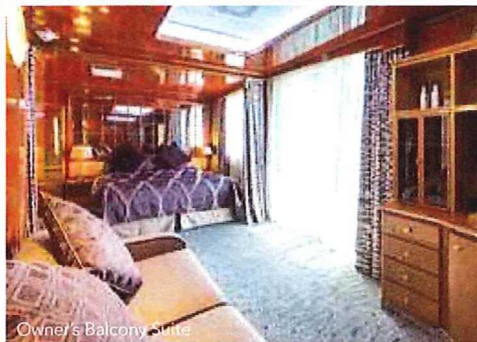
Day 14 Helsinki. Arriving in Helsinki over breakfast, our morning city tour will take us to the colourful Market Square, the President's Palace and the impressive architecture of Senate Square including the Lutheran Cathedral of Finland and Uspenski Cathedral. We continue to the Sibelius Monument and the impressive Temppeliaukio, the church in the rock before returning to the ship. This afternoon we journey to Ainola, the home of Finnish composer Jean Sibelius situated on the edge of the city on the shores of Lake Tuusula where, after exploring the museum, we will enjoy a private concert of his music.

Day 15 Helsinki to London. Disembark this morning and transfer to the airport for our scheduled flight to London.

MS HEBRIDEAN SKY



Friendly Service



Owner's Balcony Suite



The Restaurant

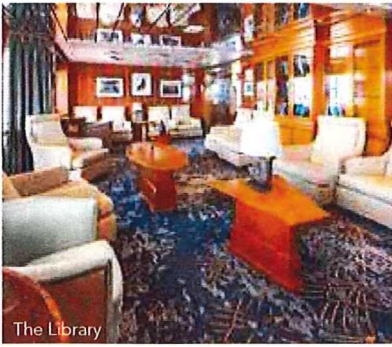
The MS Hebridean Sky is one of our two flag ships and sister vessel to the MS Island Sky. Both vessels were built in the same shipyard in Italy at similar times and share the same excellent attributes that make them two of the finest small ships in the world. With a maximum passenger capacity of only 118, a vessel of her size is capable of carrying many more but instead the MS Hebridean Sky has the benefit of unusually large suites, luxuriously appointed public areas and spacious outside decks.

Your Suite

On board there are 59 exceptionally spacious and well-designed suites. All feature a sitting area and some have private balconies. The feeling of luxury is enhanced by the wood panelling and brass, which predominates throughout the vessel conveying the atmosphere of a private yacht. The passenger accommodation is arranged over five decks and all suites have outside views with those on the Scott and Shackleton Decks featuring private balconies. Each suite affords considerable comfort with en-suite bathroom featuring vanity unit with sink and walk-in shower, large wardrobes, dressing table with large mirror and stool and excellent storage. There is a mini-fridge, flat screen television and a telephone in each suite. Refillable water bottles, towelling dressing gowns and slippers are also provided for your comfort. Other facilities include a programmable electronic safe, hairdryer, assorted Molton Brown toiletries and individually controlled air-conditioning and heating. Soft hues and blended tones enhance the traditional maritime style making the passenger accommodation an inviting and relaxing place to be.

Your Dining

With only one sitting and a maximum of just over 100 passengers, the cuisine on board the MS Hebridean Sky is of a consistent superior quality that befits such a vessel. In keeping with the informal atmosphere on board, when dining you are able to choose your seating arrangements and choice of restaurants at your leisure; whether that be joining a table of four to six other passengers in the elegant à la carte Restaurant or, outside buffet-style on the Lido Deck in the evening sunshine. In the main Restaurant, breakfast is served buffet-style, with certain items cooked to order on request. Lunch and dinner menus offer plenty of choice, often reflecting the daily catch and local delicacies. The Welcome and Farewell dinners are a sumptuous five course affair. To enhance your dining experience further a selection of wines is included with both meals. Afternoon tea and pre-dinner canapés take place in either the comfort of the Lounge or out on the Lido Deck when the weather is favourable. Tea and coffee are also available 24 hours a day. Special diets can be catered for with sufficient notice.



The Library



Superior Suite



The Club

Your Space

The spacious and finely decorated public rooms include a large Lounge on the Byrd Deck featuring a selection of seating options from individual armchairs and sofas to side cushioned benches. Daily briefings given by the Cruise Director and talks from Guest Speakers and expedition staff take place in the Lounge. In addition to the main Lounge, there is also The Club, located on the Mawson Deck which features the main bar. The Club also features a 24-hour tea and coffee station. Towards the aft of the ship on the Mawson Deck is the Library. Well stocked with reference books pertaining to the destinations the vessel is visiting and a selection of essential reads, you will not find yourself short of excellent literature on board. A collection of games as well as devices to access the internet via the ship's satellite can also be found in the Library. Access to the ship's satellite Wi-Fi via your own device is complimentary on board (signal strength varies depending on location and demand). The main Restaurant, which can seat all guests at one sitting, is located on the Amundsen Deck, and outside there is a rear Lido Deck located on the Scott Deck where meals are served in warm weather under shade. Further to this on the top Shackleton Deck there is an observation area, complete with sun loungers for sunbathing, relaxing with a book or catching up with fellow travellers. The Promenade Deck wraps around the whole ship providing outstanding views. There is also a small beauty salon on board with appointments made on request.

Your Comfort

The MS Hebridean Sky is equipped with the latest safety, navigation and communications equipment along with roll stabilisers to minimise the ship's motion. During your voyage we hope to offer you the opportunity to visit the Captain and Officers on the Bridge to check the vessel's progress by charts and learn more about your journey. On board you will also find a clinic and Doctor and a lift that serves all decks. When at anchor our nimble Zodiacs will ferry you ashore or, on select cruises, enjoy Zodiac cruises getting you closer to the natural world.

Your Life On Board

The atmosphere on board is warm and convivial and more akin to a private yacht or country hotel in which you can learn more about the wonderful destinations you are visiting in the company of like-minded people. There is a high ratio of crew to passengers and our friendly crew of 75 are mainly Filipino and Eastern European and our Captains are experienced mariners. After a day ashore you will return to the comfort and peace of a well-run and exceedingly comfortable ship where peace, high quality of service and attention to detail are the order of the day. A little music in the Lounge or bar after dinner, Guest Speakers and informative port briefings and of course good food, all contribute to make any voyage aboard this wonderful vessel a memorable and joyful experience.



Observation Deck

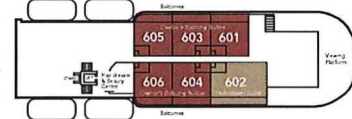


Alfresco Dining

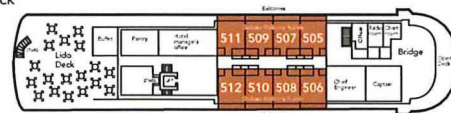
MS HEBRIDEAN SKY DECK PLAN



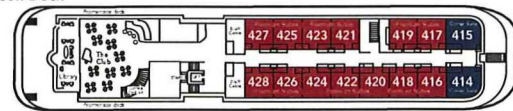
Shackleton Deck



Scott Deck



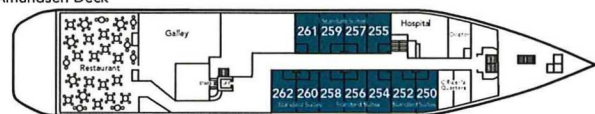
Mawson Deck



Byrd Deck



Amundsen Deck



- Standard Suites
- Corner Suites
- Owner's Balcony Suites
- Superior Suites
- Deluxe Balcony Suites
- Hebridean Suite
- Premium Suites

Please note that beds in each suite can be configured as double or twin with the exception of suites 601 and 602 which feature a fixed double bed.